

2016 Sailing World Cup

Sailing World Cup Weymouth & Portland Round SAILING INSTRUCTIONS (RSI) Addendum

Published by WS on Fri 27 May 2016

As amended on 10 June 2016

RSI 9 [DP] [NP] IDENTIFICATION AND ADVERTISING

RSI 9.1 Boats are required to display the SWC Weymouth & Portland branding that will be provided and fixed by the Organizing Authority.

RSI 10 [DP] [NP] SAFETY REGULATIONS

RSI 10.1 Emergency Communications

| | Number |
|---------------------------------|--|
| Radio Channel | Course Area VHF channel |
| Emergency services phone line | 999 |
| Organizing Authority phone line | Bas Edmonds: +44 (0)7748 635591 WPNSA: +44 (0)1305 866000 |

RSI 11 COMMUNICATIONS WITH COMPETITORS

RSI 11.1 In addition to <http://www.sailing.org/worldcup/onb.php>, notices to competitors will also be posted on the official notice board located in the Event Marquee.

RSI 11.2 Signals ashore will be displayed on the flag poles on the bridge leading to the crane pier

RSI 11.3 There will be an initial meeting with team leaders and coaches on Tuesday 7 June at 17.30 at the Home of Sailing and then a daily morning meeting at 09.00 from Thursday 9 June at the Home of Sailing. This changes NoR/SI 14.1

RSI 11.4 When flag AP is displayed ashore, '1 minute' in RRS Race Signals AP is replaced with the time shown below:

| Area | Time |
|-----------------|------------|
| Alpha & Bravo | 30 minutes |
| All other areas | 60 minutes |

RSI 15 COURSE AREAS and MARKS

RSI 15.1 Course Areas are shown in Addendum RSI 1.

RSI 15.2 Marks 1, 2, 3, and 4, or associated gate marks, will be as follows:

| Area | Marks 1, 2, 3, 4 | New Mark |
|---------|------------------|----------|
| Alpha | Yellow | Yellow |
| Charlie | Blue | Red |
| Delta | Black | Black |
| Echo | Orange | Orange |
| Foxtrot | Pink | Pink |

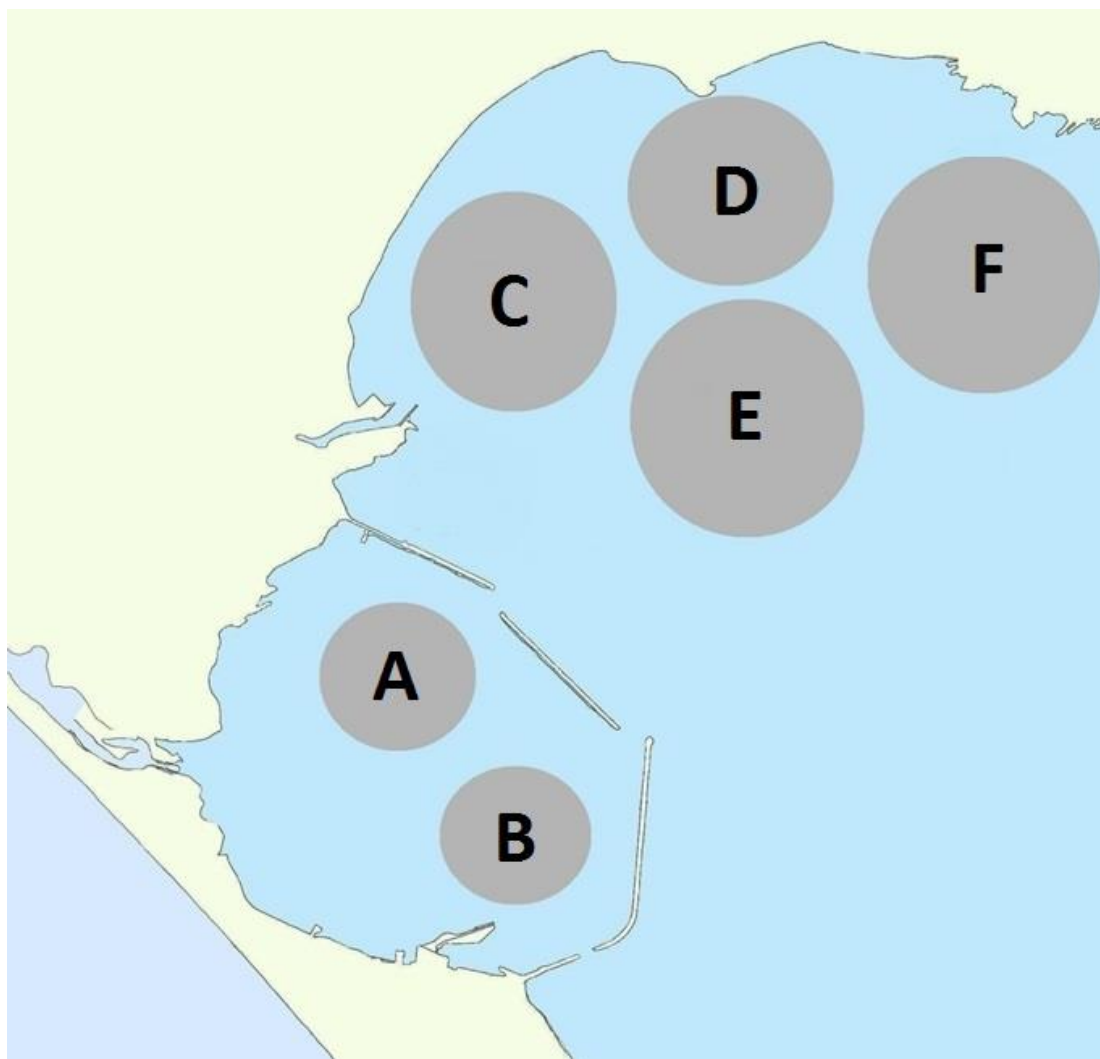
- RSI 15.3 Offset marks will be cylinder buoys of the same colour as the associated windward marks
- RSI 15.4 Marks S1, S2, and S3 will be Blue cylinder buoys with a black stripe.
- RSI 15.5 The starting and finishing line marks will be race committee vessels or marks.
- RSI 15.6 Starting and finishing line marks, when used, will be dan buoys with an Orange flag.
- RSI 15.7 For Nacra 17 only: Mark 1 will be Green and Mark 1a will be Green with a black band.

RSI 20 PROTESTS, PENALTIES and REQUESTS for REDRESS

- RSI 20.1 The protest time limit is either the number of minutes after the last boat has finished the last race of the day or “AP over A” or “N over A” is displayed for an event/fleet as shown below:

| Area | Time |
|-----------------|------------|
| Alpha & Bravo | 60 minutes |
| All other areas | 90 minutes |

RSI ADDENDUM 1 CHART OF COURSE AREAS



| Area | Area Centre | Area Diameter | VHF Channel |
|---------|------------------------------|---------------|-------------|
| Alpha | Portland Harbour | 1.2 nm | 72 |
| Charlie | 50° 37,20' N 002° 24,80 W | 1.0 nm | 88 |
| Delta | 50° 37,20' N 002° 23,60 W | 1.0 nm | 04 |
| Echo | 50° 35,50' N 002° 22,30 W | 1.0 nm | 60 |
| Foxtrot | 50° 37,00' N 002° 22,50 W | 1.0 nm | 02 |
| Bravo | Portland Harbour | Spare Area | |

RSI ADDENDUM 2 VENUE MAP

Showing the location of the, boat allocation, race office, protest office, flagstaff etc.

